



HOWARD COLLEGE QUICK FACTS 15-16

WORKFORCE TRAINING

Howard College Workforce Training offers a variety of courses designed to improve specific skills or to lead to occupational employment. These short-term courses are non-credit. Students of all ages attend to upgrade their skills, to change careers, or to enhance personal enrichment.

WORKFORCE TRAINING & COMMUNITY EDUCATION

CERTIFIED ENROLLMENT 15/16

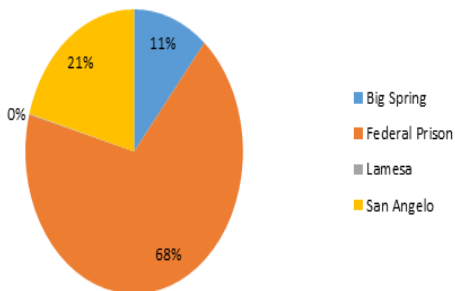
Quarter	Unduplicated Enrollment
1	1,400
2	1,517
3	1,824
4	1,344
Total	6,085

WORKFORCE TRAINING & COMMUNITY EDUCATION

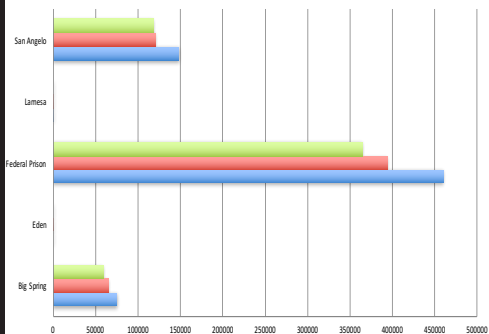
CONTACT HOURS 15/16

Quarter	Hours Generated
1	153,743
2	141,540
3	164,546
4	144,228
Total	604,057

Contact Hours Percent By Site

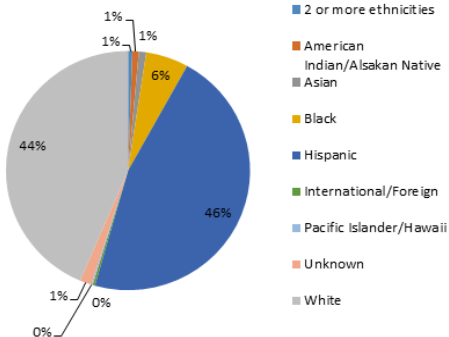


Contact Hours By Site

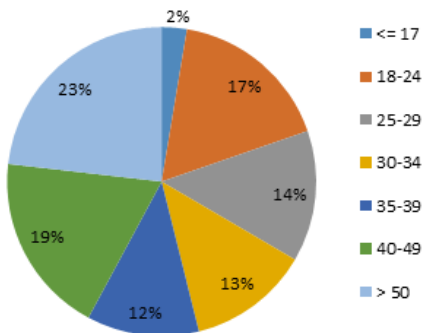


	Big Spring	Eden	Federal Prison	Lamesa	San Angelo
15/16	58897	0	364319	0	117445
14/15	64662	791	393932	574	119679
13/14	74655	0	459894	364	147559

Ethnicity

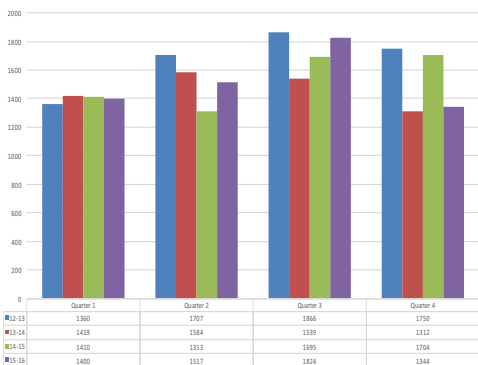


Age Distribution



Growth Trend - Past 4 Years

Enrollment by Quarter 4 Year Trend



Contact Hour by Quarter 4 Year Trend*



*Private prison contact hours not included.