



QUICK FACTS

WORKFORCE TRAINING

FALL 2014

Howard College Workforce Training offers a variety of courses designed to improve specific skills or to lead to occupational employment. These short-term courses are non-credit. Students of all ages attend to upgrade their skills, to change careers, or to enhance personal enrichment.

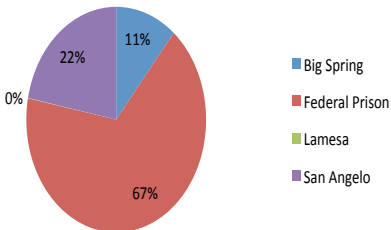
Workforce Training / Community Education Certified Enrollment 13/14

Quarter	Unduplicated Enrollment
1	1,419
2	1,584
3	1,539
4	1,312
Total	5,854

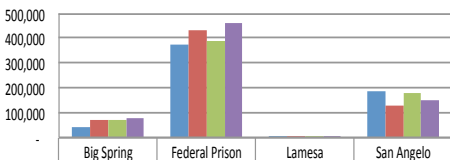
Workforce Training / Community Education Contact Hours 13/14

Quarter	Hours Generated
1	174,802
2	173,807
3	178,459
4	155,404
Total	682,472

Contact Hours Percent By Site

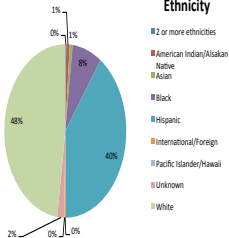


Contact Hours By Site

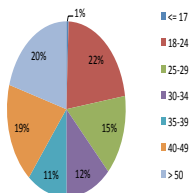


	Big Spring	Federal Prison	Lamesa	San Angelo
2010-11	45,343	370,991	3,801	183,114
2011-12	68,323	428,640	4,792	126,212
2012-13	72,273	385,668	4,395	180,091
2013-14	75,893	459,894	364	150,555

Ethnicity



Age Distribution



Student Residency

Howard County	54.27%
Tom Green County	32.41%
Other Counties in Service Area	1.18%
Texas-Outside Service Area	11.60%
Out of State / Out of Country	0.54%

Student Gender

Male: 64%

Female: 36%

Top Ten Courses

Occupational Safety & Health Management
Sanitation and Safety
Specialized Food Preparation
Management of Food Production & Service
Intro to Electrical Safety & Tools
Food Service Equipment & Planning
(New Law) w/ I.D. Crimes
Intro to Electrical Controls
BLS-CPR-Healthcare Provider
OSHA Regulation - General Industry

Top Workforce Training Contracts

Big Spring:

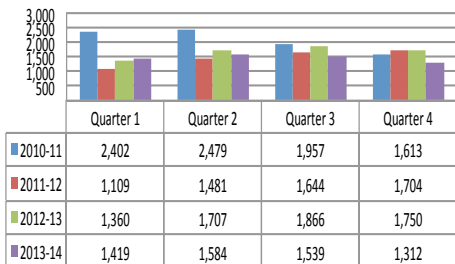
Alon USA GEO Group
Big Spring Fire Department
Permian Basin Regional Planning Commission
Federal Correctional Institution

San Angelo:

Sitel
Concho Valley Council of Governments
Eden Detention Center

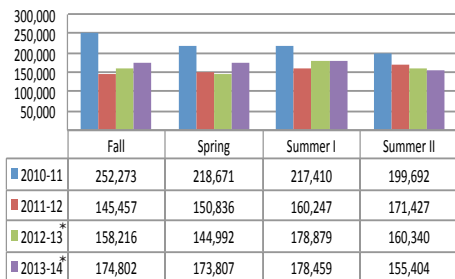
Growth Trend - Past 4 Years

Enrollment Trend By Quarter 10/11 - 13/14



Contact Hour Generation Trend

Contact Hour Trend By Quarter 10/11 - 13/14



*Private prison contact hours not included.