



**QUICK  
FACTS**  

---

**STUDENT  
SUCCESS**  
**2012/2013**

Howard College makes every effort to help our students reach their maximum potential by integrating core concepts of critical thinking into our daily business and our classrooms. We have varied educational opportunities available to meet the ever-changing needs of all learners through our four sites.

**FY2013**

**Degrees & Certificates Awarded**

<i>Core Completers</i>	<i># of Degrees Awarded</i>	<i>Certificates Awarded</i>	<i>Total Awarded</i>
226	326	235	787

**Two-year Persistence of First-time,  
Full-time, Credential-seeking Undergraduates**

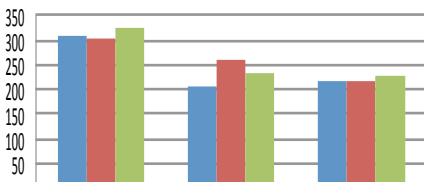
	<b>Howard</b>	<b>SWCID</b>	<b>Peer</b>
Fall 2006	37.3%	47.1%	42.2%
Fall 2010	42.1%	20.0%	40.4%
Fall 2011	39.3%	21.2%	39.7%

**Three-year Graduation & Persistence for  
First-time, Full-time, Undergraduate Students  
Requiring Developmental Education**

	<b>Howard</b>	<b>SWCID</b>	<b>Peer</b>
Fall 2008	31.7%	75.0%	32.1%
Fall 2009	40.3%	50.0%	34.9%
Fall 2010	33.2%	33.3%	31.4%

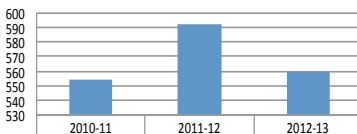
## Student Success Trends

### Awards Earned (Duplicated Count)



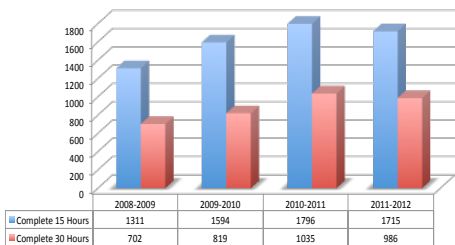
	Associates	Certificates	Core Completers
■ 2010-11	308	207	215
■ 2011-12	305	258	219
■ 2012-13	326	235	226

### Associate Degrees/Certificates/Core Completer Awards Earned (Unduplicated Headcount)

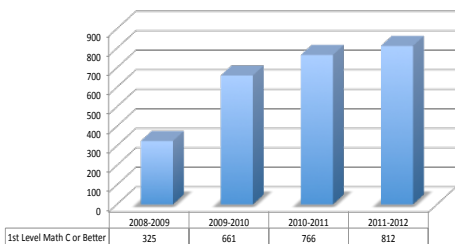


	2010-11	2011-12	2012-13
■ AssocDeg/Certs/Core Completers	554	592	560

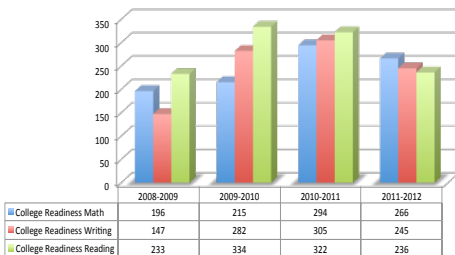
### 15 Credits - 1 Term 30 Credits - 1 Year



### 1st College Level Math C or Better



### Complete Developmental Work



---

## Excellence

### *Licensure Rate 2011-2012*

*Pass rate for programs whose graduates are required to pass a licensure exam to practice in a field:*

Cosmetology:	92.42%	Nurse, Registered:	100%
Dental Hygienist:	90%	Nurse, LVN:	90%
Respiratory Care:	83%		
Radiologic Technology:	87.5%		
Emergency Medical Services:	90%		
Surgical Technology:	100%		

---

## Success Trend

### Percent of Students Who Transferred to a 4-Year Institution with <30 SCH and >30 SCH or More

Year	HC <30	>30+	Peer <30	>30+
FY2008	30.4%	15.4%	23.6%	13.8%
FY2012	4.8%	10.8%	15.4%	13.9%
FY2013	8.0%	13.0%	12.6%	14.6%

### Graduation Rate of First-time, Full-time, Credential-seeking Students after 3,4, & 6 years

Year	Institution	Peer Group
FY2007	30.7%	34.9%
FY2009	30.3%	29.9%
FY2010	21.2%	23.3%

### Percent of Graduates from Preceding FY Who Were Employed or Enrolled in Four-Year Institution the Following Fall

FY2012	Institution	Peer Group
Total	82.5%	83.2%
Employed	60.4%	62.6%
Enrolled	11.6%	10.8%
Both Emp & Enr	10.5%	9.8%

---