



**QUICK
FACTS**

**STUDENT
SUCCESS**
2010/2011

Howard College makes every effort to help our students reach their maximum potential by integrating core concepts of critical thinking into our daily business and our classrooms. We have varied educational opportunities available to meet the ever-changing needs of all learners through our four campuses.

2010-2011

District Awards by Type

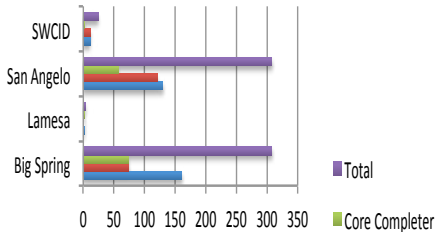
<i>Core Completers</i>	<i># of Degrees Awarded</i>	<i>Certificates Awarded</i>	<i>Total Awarded</i>
134	304	207	645

2010-2011

Graduation & Persistence Rates

	Howard	SWCID	State Avg
Graduation & Persistence Rate Entering Cohort 2003	39.1%	46.2%	42.9%
3-yr Graduation Rate Entering Cohort 2006	22.4%	10.5%	12.0%
Transfers Entering Cohort 2004	37.5%	8.2%	27.6%
Non-Transfer Completers	11.5%	21.3%	7.5%
Non Completers	50.9%	70.5%	64.9%

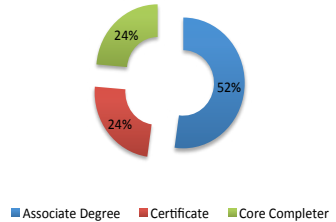
2010-2011 Degrees Awarded



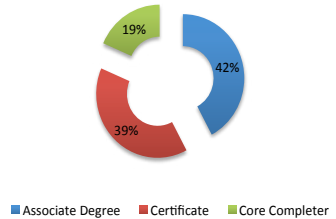
	Big Spring	Lamesa	San Angelo	SWCID
Total	308	4	308	25
Core Completer	73	2	57	2
Certificate	74	0	121	12
Associate Degree	161	2	130	11

■ Total
■ Core Completer
■ Certificate
■ Associate Degree

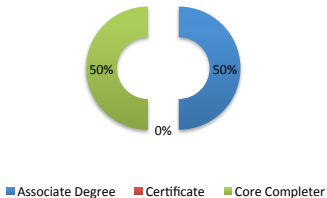
Big Spring Campus Awards by Type



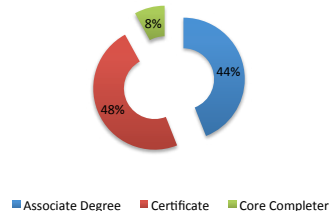
San Angelo Campus Awards by Type



Lamesa Campus Awards by Type



SWCID Campus Awards by Type



Excellence

Licensure Rate 2009-2010

Pass rate for programs whose graduates are required to pass a licensure exam to practice in a field:

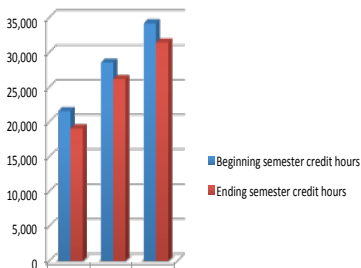
Cosmetology:	96%	Nurse, Registered:	100%
Dental Hygienist:	100%	Nurse, LVN:	97%
Respiratory Care:	100%	Respiratory Care:	100%
Radiologic Technology:	100%		
Emergency Medical Services:	56%		
Surgical Technology:	100%		

Significant Recognitions 2010-2011

Number of newly inducted members in Phi Theta Kappa:	124
Number of students eligible for Phi Theta Kappa membership:	413

Success Trend

**Course Completion Rate
Undergraduate State Funded Credit Hours**



Beginning semester credit hours	21,554	28,526	34,176
Ending semester credit hours	19,054	26,150	31,409