

mission  
innovative  
success  
integrity  
numbers  
quality  
report  
students  
outcomes



## Quick Facts 2018

# HOWARD COLLEGE

— MAKING DREAMS REAL —



Big Spring  
Lamesa  
San Angelo  
SWCID



## VISION

To be a leader in education...for learning, for earning, for life!

## MISSION

As one unified district, Howard College builds communities through quality, innovative education for lifelong learning.

Howard College primarily serves the communities of its taxing district of Howard County and the twelve other counties in its service area (Coke, Kimble, Martin, Concho, Menard, Dawson, Schleicher, Glasscock, Sterling, Irion, Sutton, Tom Green) as well as the deaf and hard-of-hearing community in its state-legislated responsibility for the SouthWest Collegiate Institute for the Deaf. Students who choose to attend the college district from places outside of the taxing district and service area are integrated into the college community. Howard College offers career technical/workforce and academic courses for certificates and associate degrees, continuing education, remedial and compensatory education consistent with open-admission policies. Appropriate student services are also provided. Howard College strives to enhance economic, community, cultural, and personal development across the service area through appropriate partnerships and services in meeting its public service mission. As a community college, research is not included in the mission of Howard College. However, exploration of innovative teaching and student development practices to enhance learning is supported and expected.

## MOTTO

Howard College ... for Learning, for Earning, for Life!



Howard County Junior College District (HCJCD) provides instruction at sites in Big Spring, Lamesa, and San Angelo. Included are course offerings at 5 correctional institutions and 28 different school districts throughout the 13-county service area. The deaf and hard of hearing are served at the SouthWest Collegiate Institute for the Deaf campus in Big Spring.



Rating on General Obligation Refunding Bond, Series 2016:  
AA- with Stable Outlook.



# District

## Demographics

Fall 2016

Fall 2017

**4554**

Enrollment



**4356**

Enrollment

**51.6%**  
Dual Credit

**15.7%**  
Online\*

**705,536**  
Contact Hours

\*Students taking at least one online course

**50.3%**  
Dual Credit

**19.2%**  
Online\*

**684,800**  
Contact Hours

**56.8%**

Full Time

Excluding Dual Credit

**43.2%**

Part Time

## Residency Breakdown



In District 15.2%

Out of District 82.1%

Non Resident 2.3%

Foreign 0.4%

## Ethnicity



Black/African American 3.7%

Hispanic of any race 48.7%

White 42.5%

Two or more races 2.3%

Age 14 - 19 **64.1%**

**17.6%** Age 20 - 24

Age 25 - 39 **14.7%**

**3.4%** Age 40 - 68



# Big Spring

## Demographics

Fall 2016

Fall 2017

**1499**

Enrollment



**1393**

Enrollment

**49.1%**  
Dual Credit

**31.2%**  
Online\*

**273,120**  
Contact Hours

\*Students taking at least one online course

**48.3%**  
Dual Credit

**36.4%**  
Online\*

**270,172**  
Contact Hours

**64.4%**

Full Time

Excluding Dual Credit

**35.6%**

Part Time

## Residency Breakdown



In District 46.3%

Out of District 48.5%

Non Resident 4.7%

Foreign 0.5%

## Ethnicity



Black/African American 4.1%

Hispanic of any race 36.4%

White 53.3%

Two or more races 2.6%

Age 14 - 19 **68.1%**

**16.6%** Age 20 - 24

Age 25 - 39 **12.2%**

**3.1%** Age 40 - 68



# Lamesa

## Demographics

Fall 2016

Fall 2017

**138**  
Enrollment



**157**  
Enrollment

**63%**  
Dual Credit

**19.5%**  
Online\*

**14,944**  
Contact Hours

**61.7%**  
Dual Credit

**18.4%**  
Online\*

**16,516**  
Contact Hours

\*Students taking at least one online course

**46.7%**

Full Time

Excluding Dual Credit

**53.3%**

Part Time

## Residency Breakdown



In District .6%  
Out of District 99.4%  
Non Resident 0%  
Foreign 0%

## Ethnicity



Black/African American 2%  
Hispanic of any race 53.5%  
White 41.4%  
Two or more races .6%

Age 14 - 19 **73.2%**

**12.1%** Age 20 - 24

Age 25 - 39 **12.1%**

**2.6%** Age 40 - 68



# San Angelo

## Demographics

Fall 2016

Fall 2017

**2811**

Enrollment



**2714**

Enrollment

**53.4%**  
Dual Credit

**7.8%**  
Online\*

**391,872**  
Contact Hours

**51.5%**  
Dual Credit

**10.9%**  
Online\*

**372,832**  
Contact Hours

\*Students taking at least one online course

**50.9%**

Full Time

Excluding Dual Credit

**49.1%**

Part Time

## Residency Breakdown



In District 0.2%  
Out of District 99.4%  
Non Resident 0.3%  
Foreign 0.1%

## Ethnicity



Black/African American 3%  
Hispanic of any race 55%  
White 38%  
Two or more races 2.1%

Age 14 - 19

63%

17.5%

Age 20 - 24

Age 25 - 39

15.9%

3.6%

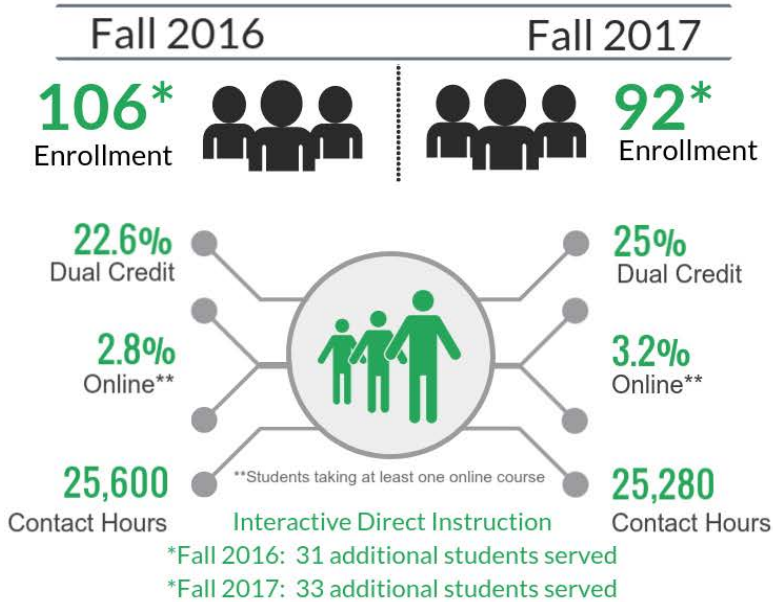
Age 40 - 68





# SWCID

## Demographics



**88%**  
Full Time  
Excluding Dual Credit

**12%**  
Part Time

### Ethnicity

Black/African American 17.3%  
Hispanic of any race 41.3%  
White 20.7%  
All Other 20.7%

### Residency Breakdown



In District 11.9%  
Out of District 52.2%  
Non Resident 27.2%  
Foreign 8.7%





# Workforce Training Community Education

## 2017-18 Headcount

1378

Big Spring

1523

Federal Prison

1941

San Angelo

4871

District

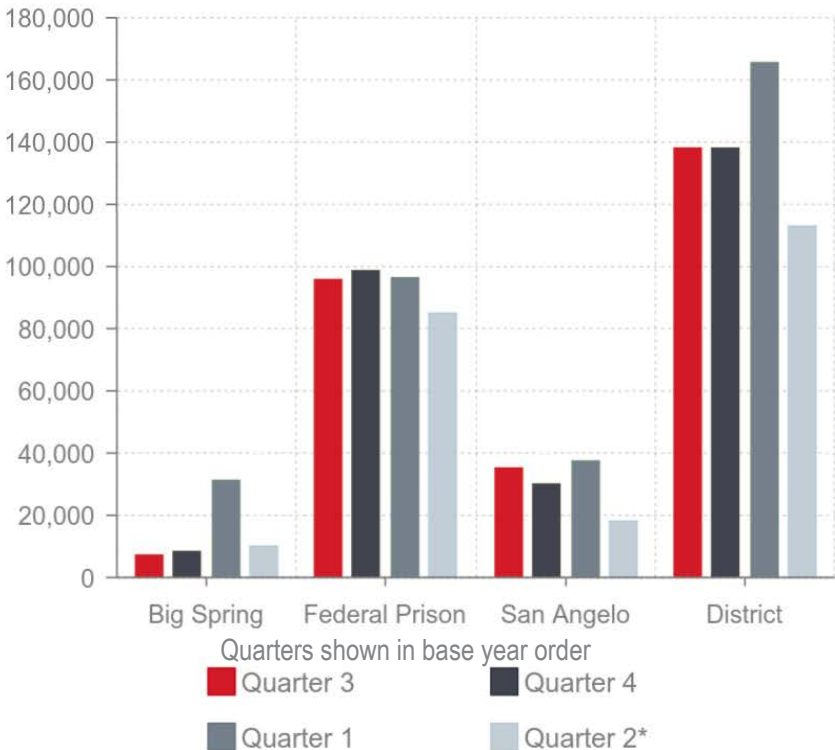
## 2017-18 Contact Hours

Quarter 1: September-November

Quarter 3: March-May

Quarter 2: December-February

Quarter 4: June-August



\*Not Certified When Report Was Completed





# Student Success

## Degrees & Certificates 2016-2017



**404**

Associate Degrees  
District



**203**

Certificates  
District

156 - D

75 - C

Big Spring

8 - D

0 - C

Lamesa

226 - D

119 - C

San Angelo

14 - D

9 - C

SWCID

## 2017 Licensure Pass Rates

100%

Dental Hygiene  
Big Spring

100%

Radiology Tech  
San Angelo

100%

Respiratory Tech  
San Angelo

100%

LVN  
San Angelo

100%

Cosmetology  
San Angelo

100%

Medical Assistant  
San Angelo

96.7%

RN  
Big Spring

94%

Cosmetology  
Big Spring

94%

EMS  
District

87.5%

LVN  
Big Spring

83.3%

RN  
San Angelo

71.4%

Surgical Tech  
San Angelo



# Success Point Three-Year Comparison

Success Point Category	2015	2016	2017
Math Readiness	146	171	180
Reading Readiness	39	63	75
Writing Readiness	52	58	64
Students Who Complete 15 SCH	1151	1111	1308
Students Who Complete 30 SCH	513	569	609
Students Who Transfer to 4-Yr Institution	1046	1050	856
Students Who Pass FCL Math Course	636	615	641
Students Who Pass FCL Reading Course	588	645	670
Students Who Pass FCL Writing Course	418	468	444
Degrees or Certificates in Critical Fields	353	320	457
Degrees, Core Curriculum Completers, or Certificates (Unduplicated)	686	830	836

Through December 2017

**Three-Year Average  
5,888**

**2015  
5,627**

**2016  
5,899**

**2017  
6,138**

Total Points



## TUITION & FEES



### PER HOUR

In District  
Out of District  
Non-Resident

### FALL 2017

\$90  
\$137  
\$186



ESTIMATE 12 HRS	TUITION	FEES*	TOTAL
In District	\$954	\$125	\$1,079
Out of District	\$1,524	\$125	\$1,649
Non-Resident	\$2,108	\$125	\$2,233

\*Fees for San Angelo are \$220 more due to a higher building use fee..

## SWCID TUITION & FEES

Qualified Texas deaf residents are exempt from tuition/fees. Room and board charges are still applied. Based on state law, out-of-state deaf students are charged non-resident tuition and fees at \$475 per hour.

Hearing students who are enrolled in the Interpreter Training or Deaf-Support Services Programs are assessed the applicable tuition and fees based upon their residency status.



ESTIMATE 12 HRS	TUITION	FEES	TOTAL	SCH
Qualified Deaf Texas Resident	\$0	\$0	\$0	\$0
Non-Resident	\$5,580	\$125	\$5,705	\$475



# FINANCIAL SNAPSHOT

## Howard County

Property Tax	2016-17	2017-18	% Rate Change
Current Operations	\$0.263163	\$0.265831	1.01%
Debt Service	\$0.050635	\$0.048454	-4.31%
Total Tax Rate	\$0.313798	\$0.314285	0.16%

M&O tax revenue increased 3.0% for 2017/18 • Total tax revenue increased 2.11% for 2017/18

### Net Assessed Valuation

Adjusted Tax Base 2016	\$2,768,180,314
Adjusted Tax Base 2017	\$2,920,628,536

## 17/18 Howard College State Appropriation Funding Allocation\*

	Amount			Percentage		
	District Operations / Big Spring	San Angelo	Total	District Operations / Big Spring	San Angelo	Total
Core Operations (District)	\$ 542,264	\$ 138,142	\$ 680,406	13.92%	5.60%	10.70%
Contact Hours	3,110,587	2,074,877	5,185,464	79.86%	84.16%	81.52%
Student Success Points	242,164	252,524	494,688	6.22%	10.24%	7.78%
Total	\$ 3,895,015	\$2,465,543	\$ 6,360,558	100.00%	100.00%	100.00%

\*Does not include SWCID special item of \$3,326,403

## 17/18 CURRENT UNRESTRICTED BUDGET

	Amount			
	District Operations / Big Spring Area	San Angelo	SWCID	Total
Revenue				
Unrestricted Revenue	\$2,388,468	\$436,838	\$54,100	\$2,879,406
State Appropriation	3,895,015	2,465,543	3,326,403	9,686,961
Ad Valorem Taxes	7,689,085	-	-	7,689,085
Tuition & Fees	3,498,680	5,657,284	904,910	10,060,874
SA District Cost	603,412	-	-	603,412
Total Revenue	\$18,074,660	\$8,559,665	\$4,285,413	\$30,919,738
Expenses				
Operating Expenses	\$6,756,713	\$2,481,664	\$1,414,316	\$10,652,693
Payroll	8,457,598	3,814,105	2,191,629	14,463,332
Benefits	2,424,658	885,984	663,024	3,973,666
SA District Cost	-	603,412	-	603,412
Debt Retirement	357,191	763,200	3,444	1,123,835
Transfer Dorm Forfeit Income	2,500	-	-	2,500
Est. TPEG Transfer	76,000	11,300	13,000	100,300
Projects from Fund Balance	829,718	300,467	373,000	1,503,185
Total Expenses	\$18,904,378	\$8,860,132	\$4,658,413	\$32,422,923